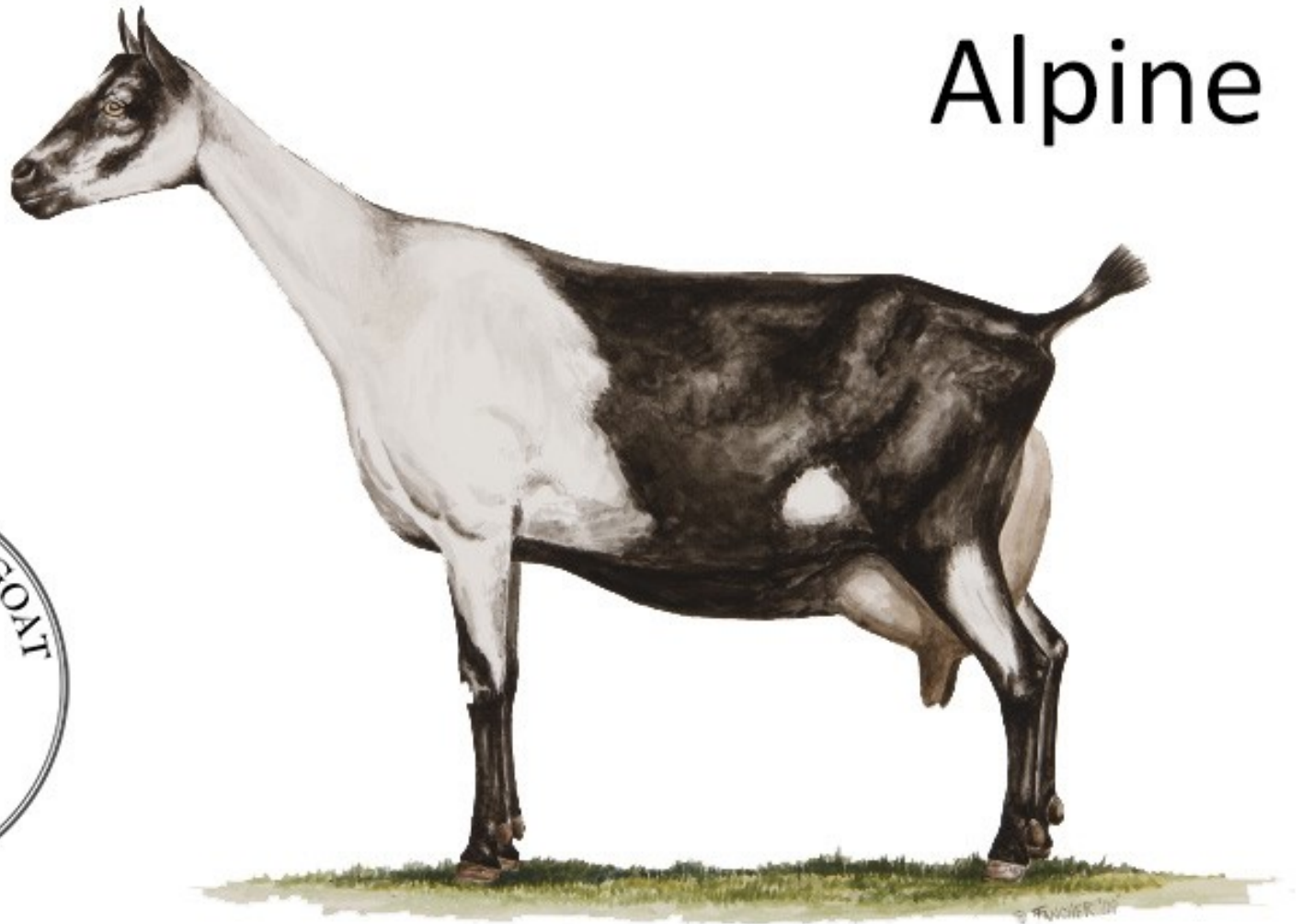


Alpine



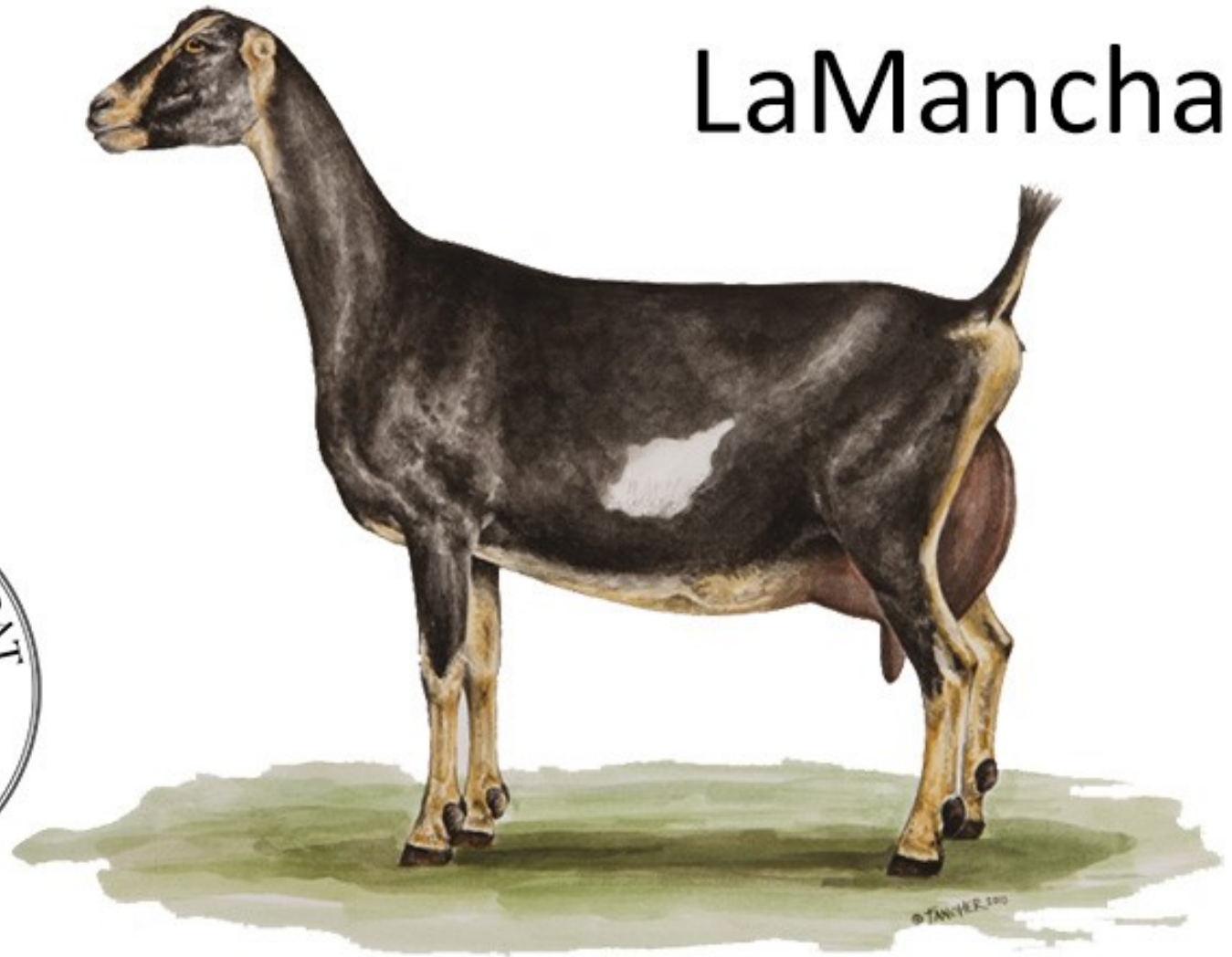
Alpine does are at least 30 inches tall and weigh approx. 135 pounds while bucks are at least 32 inches tall and weigh close to 170 pounds. They have erect ears and come in many colors and color combinations. The hair is medium to short and the bridge of the nose is straight. The Alpine is known for being a hardy, adaptable animal that thrives in any climate while maintaining good health and excellent production.

Guernsey



Guernsey- erect ears – color must be shades of gold, ranging from very pale flaxen cream to deep russet or bronze. Full or partial roaning; white patches; white face; star/blaze are acceptable. The golden body color should be dominant, with no preference shown to any shade or pattern. Hair may be short or long and flowing or a combination of both. A long curtain, skirt, and/or dorsal fringe of body hair are desirable, although not required to meet standard. Skin color must display a gold tone, ranging from peachy- flesh to orange-gold in one or more of these places; muzzle, ears, eyes, under tail, mammary or scrotum.

LaMancha



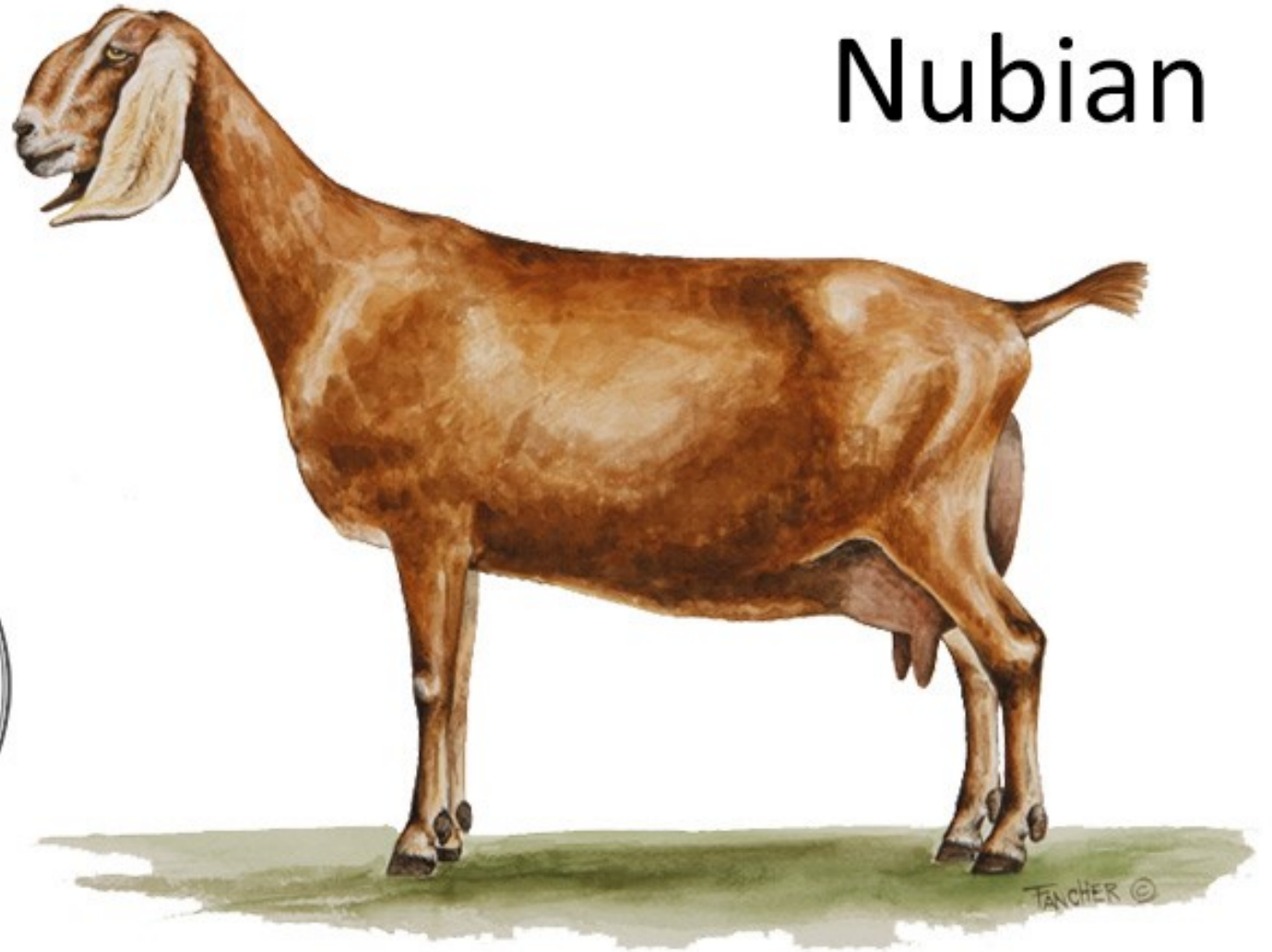
LaMancha does are at least 28 inches tall and weigh 130 pounds while bucks are at least 30 inches tall and weigh 160 pounds. Any color or color combination is acceptable. The hair is short, fine and glossy and the bridge of the nose is straight. The distinctive feature of the LaMancha is very short ears. To be registered, bucks may have ears no longer than one inch with little or no cartilage. Does may have ears up to two inches in length. The LaMancha breed was developed in the United States and is known for its calm nature. It produces well in a variety of climates and conditions.

Nigerian Dwarf



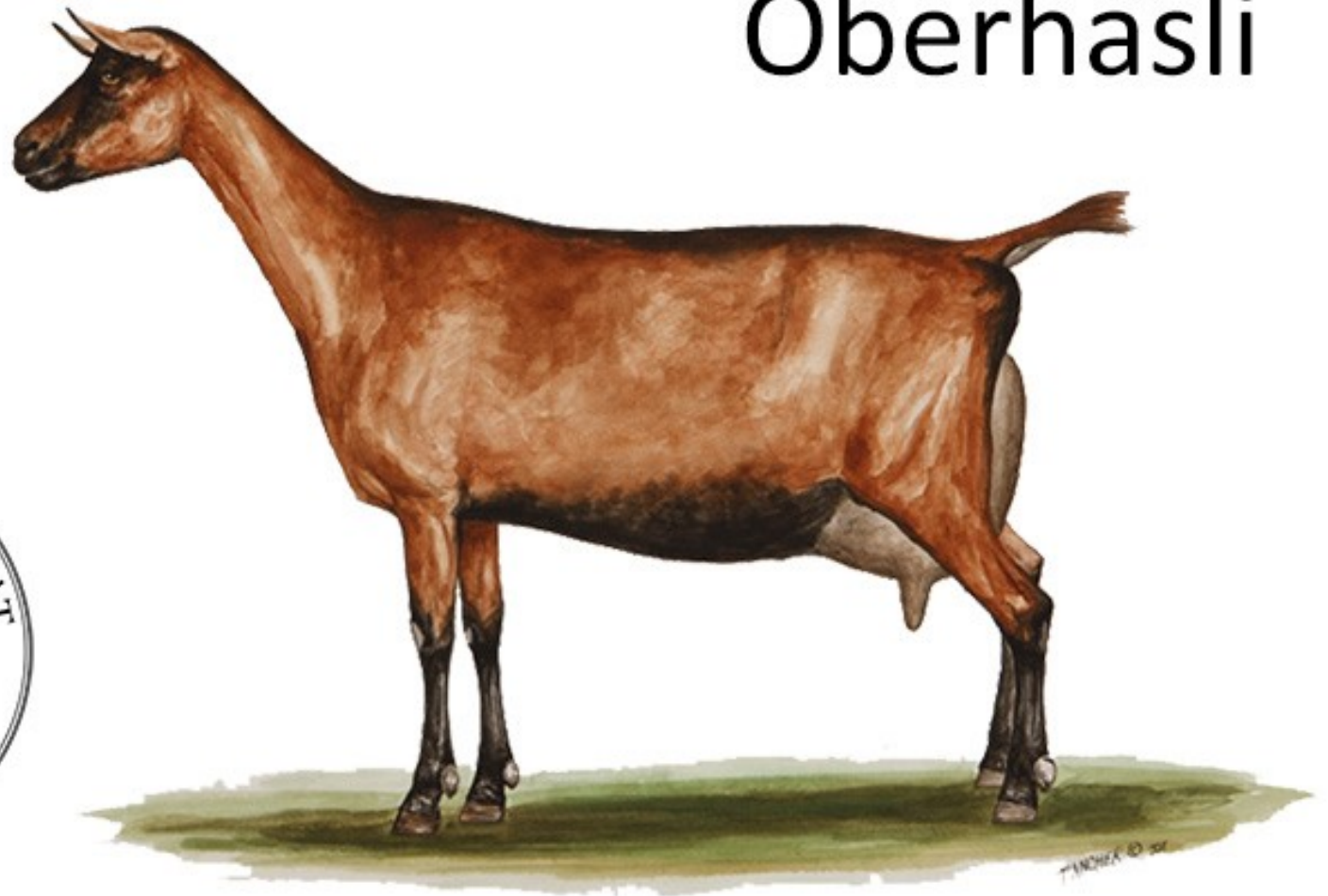
Nigerian Dwarf does are at least 17 inches tall and may be no taller than 22.5 inches. Bucks are also at least 17 inches tall and no taller than 23.5 inches. While there is no weight requirement, 75 pounds is an average weight. Many color combinations are common, the ears are of medium length and erect, and the bridge of the nose is either straight or dished. The hair is short and fine. The Nigerian Dwarf was also developed in the United States and is the only miniature dairy goat breed registered by the American Dairy Goat Association. Although a small goat, the Nigerian Dwarf doe produces a proportionate quantity of milk often with higher butterfat than standard sized goats.

Nubian



Nubian does are at least 30 inches tall and weigh 135 pounds, while bucks are at least 32 inches tall and weigh 170 pounds. The head is the distinctive breed characteristic with the facial profile between the eyes and the muzzle being strongly convex, often referred to as a “Roman nose.” The ears are “pendulous,” hanging down and flaring out and forward at their rounded tip and extending at least one inch below the muzzle. Nubians may be any color, solid or patterned. The hair is short, fine and glossy. This breed is also known for the high butterfat and protein content of its milk.

Oberhasli



Oberhasli does are at least 28 inches tall and weigh 120 pounds while bucks are at least 30 inches tall and weigh 150 pounds. Oberhasli color is described as bay, ranging from light to a deep red bay with correct black markings. Does may also be solid black. Oberhasli have short erect ears and the bridge of the nose should be either straight or dished. This breed is also known for its calm disposition.

Saanen



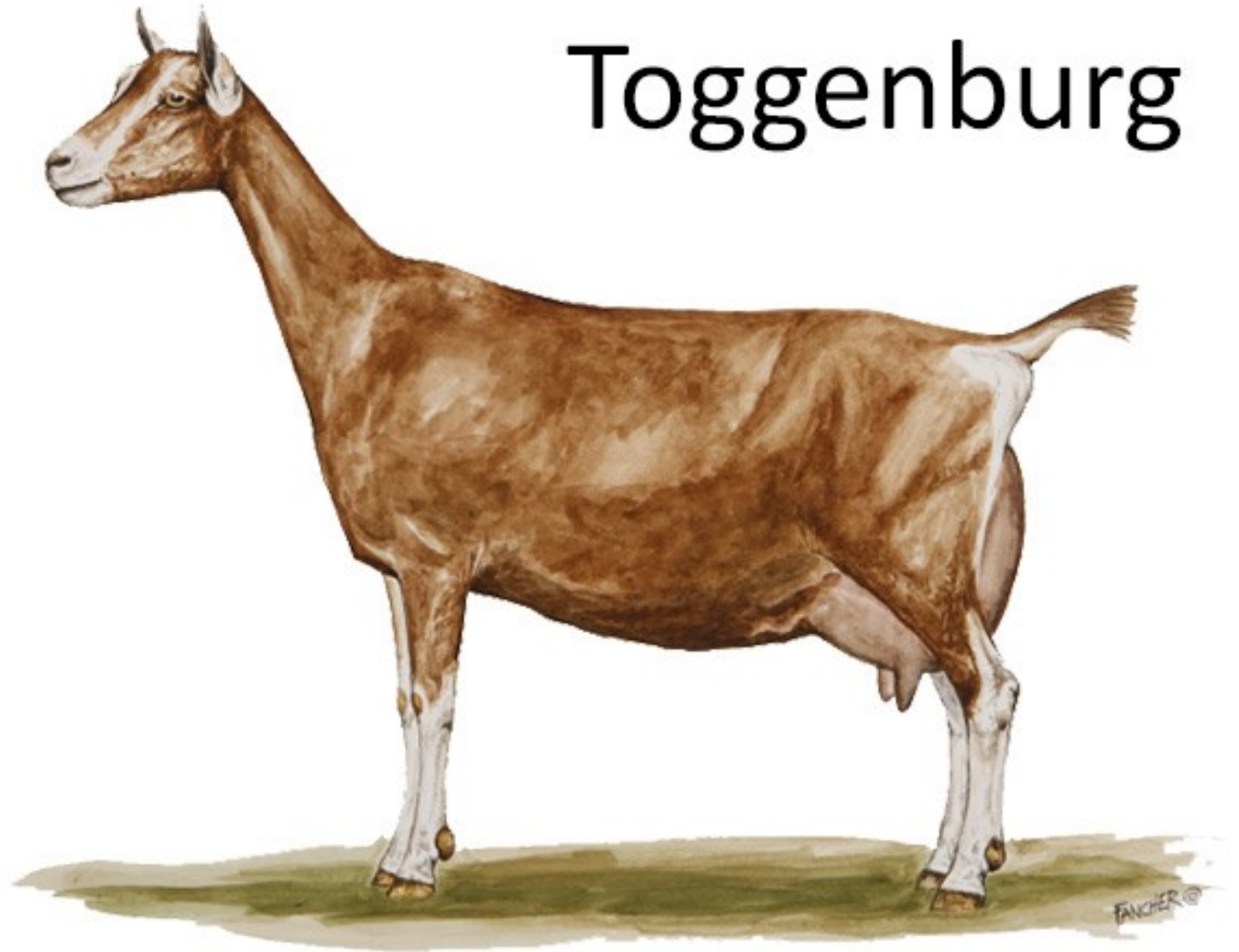
Saanen does are at least 30 inches tall and weigh 135 pounds while bucks are at least 32 inches tall and weigh 170 pounds. Saanens are distinguished by solid white or light cream-colored hair. Spots may exist on the skin and a spot in the hair up to 1 ½ inches across is allowable. Saanen ears are erect, and the bridge of the nose is either straight or dished. The Saanen is a favorite for commercial dairies due to its high milk production and exceptionally calm temperament.

Sable



Sable does are at least 30 inches tall and weigh 135 pounds while bucks are at least 32 inches tall and weigh 170 pounds. Sables may be any color or combination of colors except solid white or solid light cream. They are from similar origins and genetic lines as Saanens and the distinction between the breeds is mostly in color. The hair is short, and the ears should be erect. The bridge of the nose should either be straight or dished. Sables have the same high milk production and calm temperament as the Saanen.

Toggenburg



Toggenburg does are at least 26 inches tall and weigh 120 pounds while bucks are at least 28 inches tall and weigh 150 pounds. Hair color is solid, varying from light fawn to dark chocolate with correct white or cream markings. Does may be black with correct white or cream markings. The ears are erect and carried forward. The bridge of the nose may be straight or dished. Toggenburgs were among the first purebred dairy goats to be imported into the United States and registered.